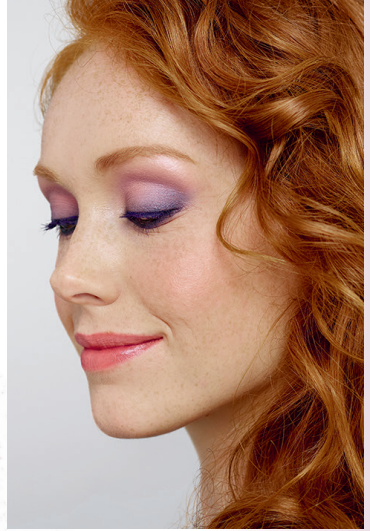


Dr. Hauschka



Big Sensation

We used the following products for Anne's make-up:



Complexion



Foundation



Loose Powder



Light Reflecting
Concealer



Blush Duo 03

Lips



Lip Gloss 05

Eyes



Eye & Brow
Palette



Eyeshadow
Trio 03



Eyeshadow
06



Eye
Definer 01



Volume Mascara 03

Big Sensation

Expressive, modern and creative.

Your step-by-step to a dramatic, colourful look for the evening.

Prepare your complexion with the appropriate **Foundation** for your skin tone then set with **Loose Powder**. Follow with **Light Reflecting Concealer** to add highlights. Accentuate the eyebrows with the shades from the **Eye & Brow Palette**.

1.

Apply **Eye Definer 01 Black** to the inner and outer parts of the upper and lower eyelid edges to accentuate the eyes' shape. Use the applicator on the end of the pen to soften the line.

2.

Apply the lightest shade from the **Eyeshadow Trio 03 Ametrine** from the inner corner of the eye to the middle of the movable lid.

3.

To create an expressive look with great depth, apply the darkest shade from the **Eyeshadow Trio 03 Ametrine** to the lower and upper outer corners of the eye.

4.

Dab the middle shade from the **Eyeshadow Trio 03 Ametrine** onto the brow bones and the upper and lower edges of the eyelids.

5.

Apply **Eyeshadow 06 white opal** to the area below the eyebrows as a highlight.

6.

For an expressive yet soft eye make-up finish, apply **Volume Mascara 03 Plum** to the upper and lower lashes.

7.

Mix the two shades from the **Blush Duo 03 Sun-kissed Nectarine** and apply to the upper cheekbones.

8.

For even greater radiance, apply **Lip Gloss 03 Blackberry** to the lips.

